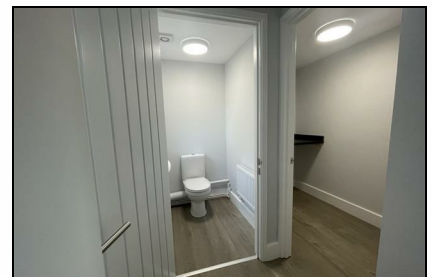


Alland Grange Lane
Ramsgate
CT12 5BX

£1,100 PCM

Finn's
82 Castle Street
Canterbury
CT1 2QD
t: 01227 452111
e: canterbury@finns.co.uk
www.finns.co.uk



A two bedroom terraced cottage located in the village of Manston. The ground floor consists of an open plan living/dining room, kitchen, utility room and WC. On the 1st floor there is a bathroom, a double bedroom, and a single bedroom. Outside there is a maintenance-free private garden and off-street parking for 1 car. Manston is located one mile from Ramsgate with its new Thanet Parkway Railway Station offering high speeds services to London in 70 minutes.

Regret no children as property is located on a working farm.

One small/medium pet may be considered.

- Terraced Cottage
- Two Bedrooms
- Open Plan Living
- Private Garden
- Off Street Parking for One Car
- Within two miles of high speed train link
- EPC Band E
- Council Tax Band B
- Deposit £1,265.00
- One small family pet may be considered



Viewing: By appointment through Finn's, Canterbury
 Telephone: 01227 452111

Council Tax: B
 Date: These particulars were prepared on: 22nd December 2025

| Energy Efficiency Rating | | |
|---|----------------------------|-----------|
| | Current | Potential |
| Very energy efficient - lower running costs | | |
| (92 plus) A | | |
| (81-91) B | | |
| (69-80) C | | 74 |
| (55-68) D | | |
| (39-54) E | 44 | |
| (21-38) F | | |
| (1-20) G | | |
| Not energy efficient - higher running costs | | |
| England & Wales | EU Directive 2002/91/EC | |

Agent's Note: Wherever appliances or services, fixtures or fittings have been mentioned in these particulars they have not been tested by us. Measurements should not be relied upon. Unless specifically referred to above all fitted carpets, curtains, fixtures and fittings and garden outbuildings and ornaments are excluded from the sale. None of the statements in these particulars are to be relied upon as statements or representatives of fact. Photographs are for guidance only and do not imply items shown are included in the sale - some aspects may have changed since they were taken. No person in the employment of Finn's has authority to give any representation or warranty in relation to this property.

FINN'S CANTERBURY
 82 Castle Street
 Canterbury
 Kent CT1 2QD
 Lettings: 01227 452111

FINN'S SANDWICH
 2 Market Street
 Sandwich
 Kent CT13 9DA
 Lettings: 01304 614471

FINN'S ST NICHOLAS AT WADE
 The Packhouse
 Wantsum Way
 St Nicholas at Wade
 Kent CT7 0NE
 01843 848320

